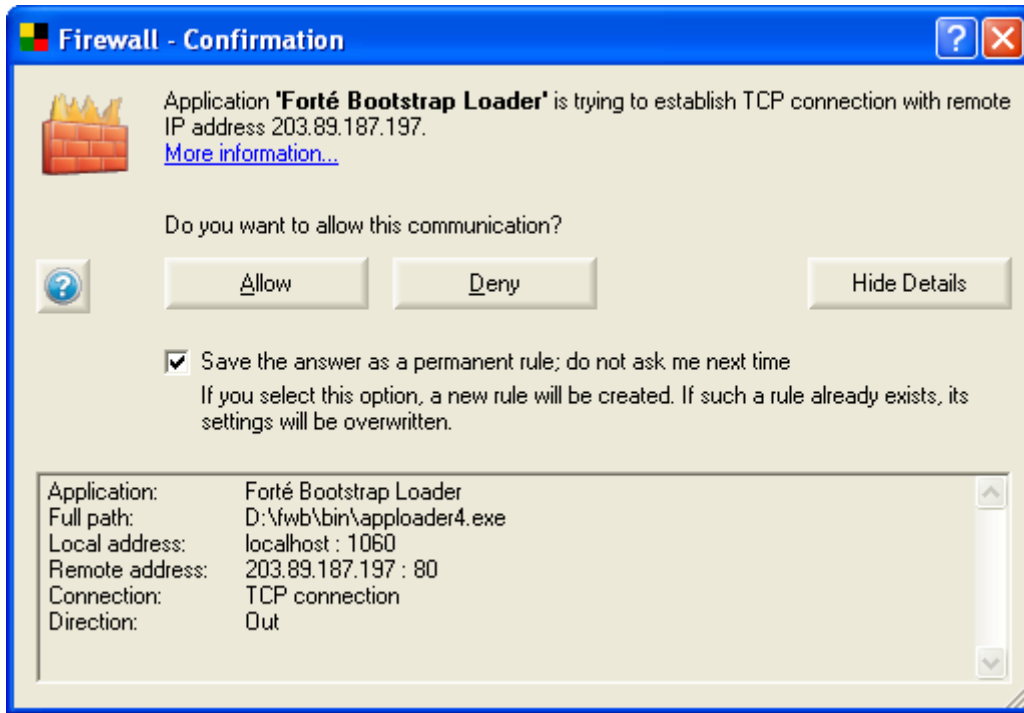


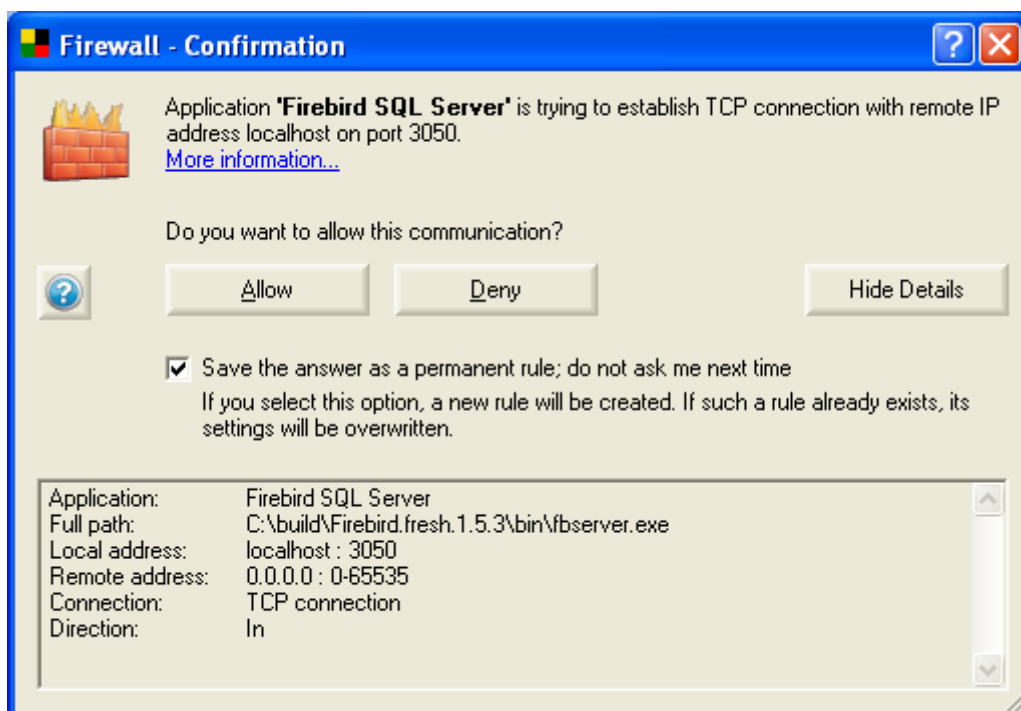
# Forté Firewall Settings: AVG

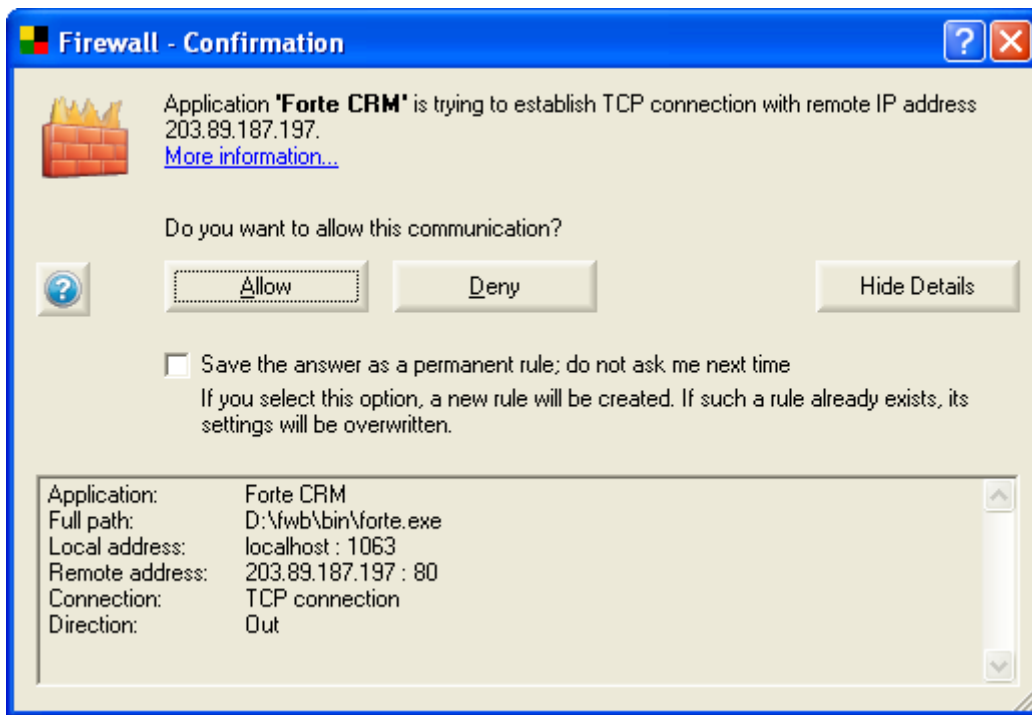
## *Networked Version (Monaco, New York):*

When Forté is run for the first time, the following window may appear:



Tick the 'Save the answer as a permanent rule..' box and click 'Allow'. The application will download and update. You will be presented with the Forté login window. After clicking 'Ok' the following Windows may appear:

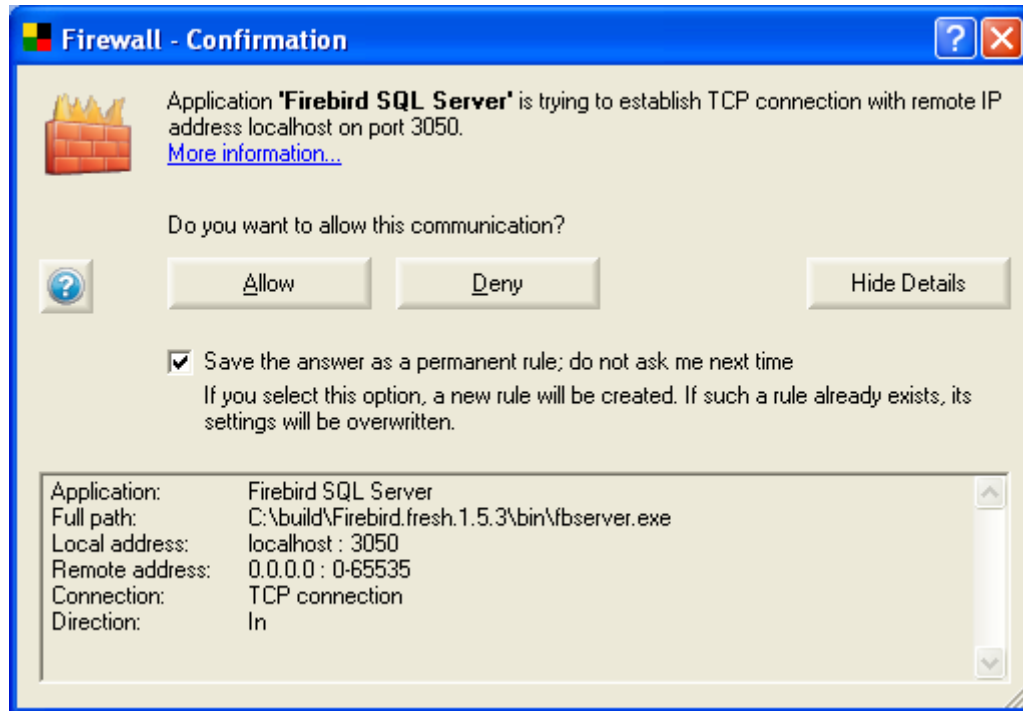




Tick the 'Save the answer as a permanent rule..' box and click 'Allow'.

## Forte Capri

When Forte is first run, the following window may appear:

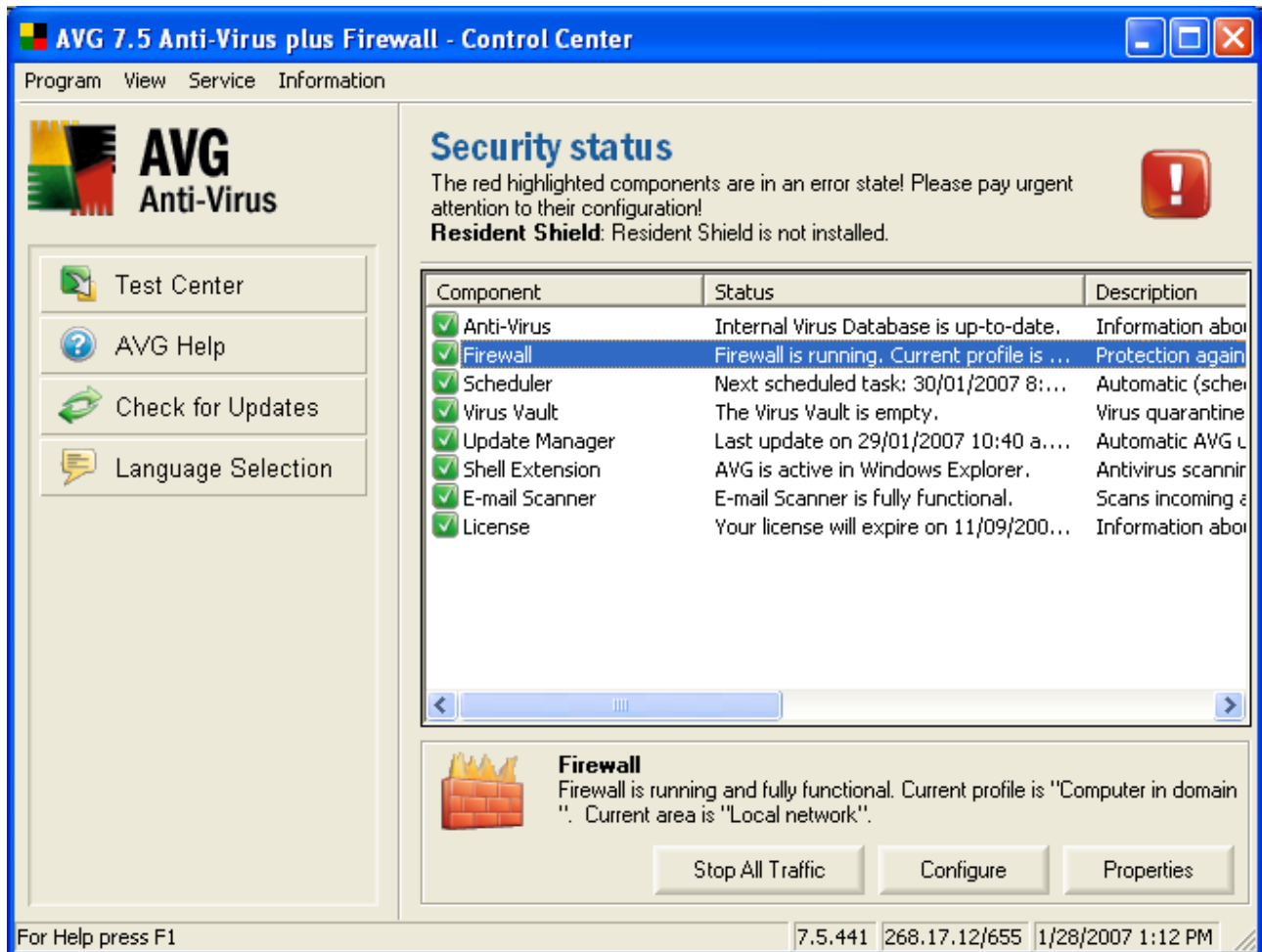


Tick the 'Save the answer as a permanent rule..' box and click 'Allow'.

## Change Settings

If you accidentally clicked deny, or are having trouble accessing the database, use the following to ensure that the firewall is configured to allow network access to Forté.

Open AVG firewall and double click on the 'firewall' item:



**AVG 7.5 Anti-Virus plus Firewall - Control Center**

Program View Service Information

**AVG Anti-Virus**

- Test Center
- AVG Help
- Check for Updates
- Language Selection

### Security status

The red highlighted components are in an error state! Please pay urgent attention to their configuration!

**Resident Shield:** Resident Shield is not installed.

Component	Status	Description
✓ Anti-Virus	Internal Virus Database is up-to-date.	Information about
✓ Firewall	Firewall is running. Current profile is ...	Protection again
✓ Scheduler	Next scheduled task: 30/01/2007 8:...	Automatic (sche
✓ Virus Vault	The Virus Vault is empty.	Virus quarantine
✓ Update Manager	Last update on 29/01/2007 10:40 a...	Automatic AVG L
✓ Shell Extension	AVG is active in Windows Explorer.	Antivirus scannir
✓ E-mail Scanner	E-mail Scanner is fully functional.	Scans incoming e
✓ License	Your license will expire on 11/09/200...	Information about

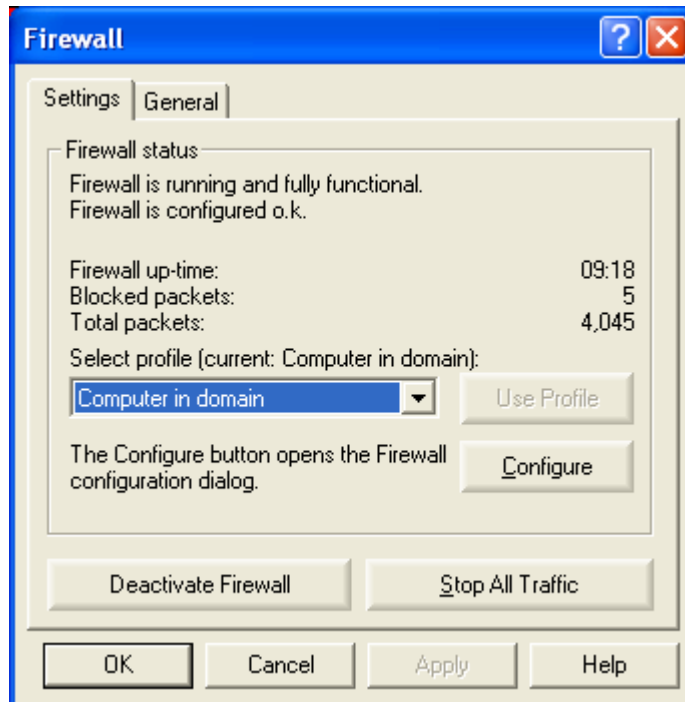
**Firewall**

Firewall is running and fully functional. Current profile is "Computer in domain". Current area is "Local network".

Stop All Traffic    Configure    Properties

For Help press F1    7.5.441    268.17.12/655    1/28/2007 1:12 PM

The following window will appear. Click on 'Configure':



Select the 'Applications' tab and ensure that access is allowed to the following applications:

1. Forte Bootstrap Loader
2. Forte CRM
3. Firebird SQL Server

